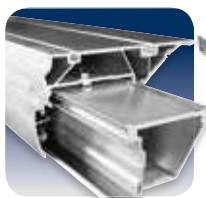




Saw Unit
sturdy structure



Sliding Carriage
high cutting quality

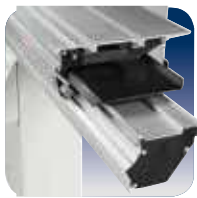


Rip Fence
smoothness and
precision

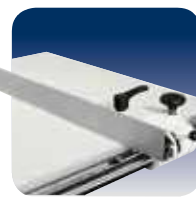
High construction quality for reliability
and safe performance.



Saw Unit
sturdy structure



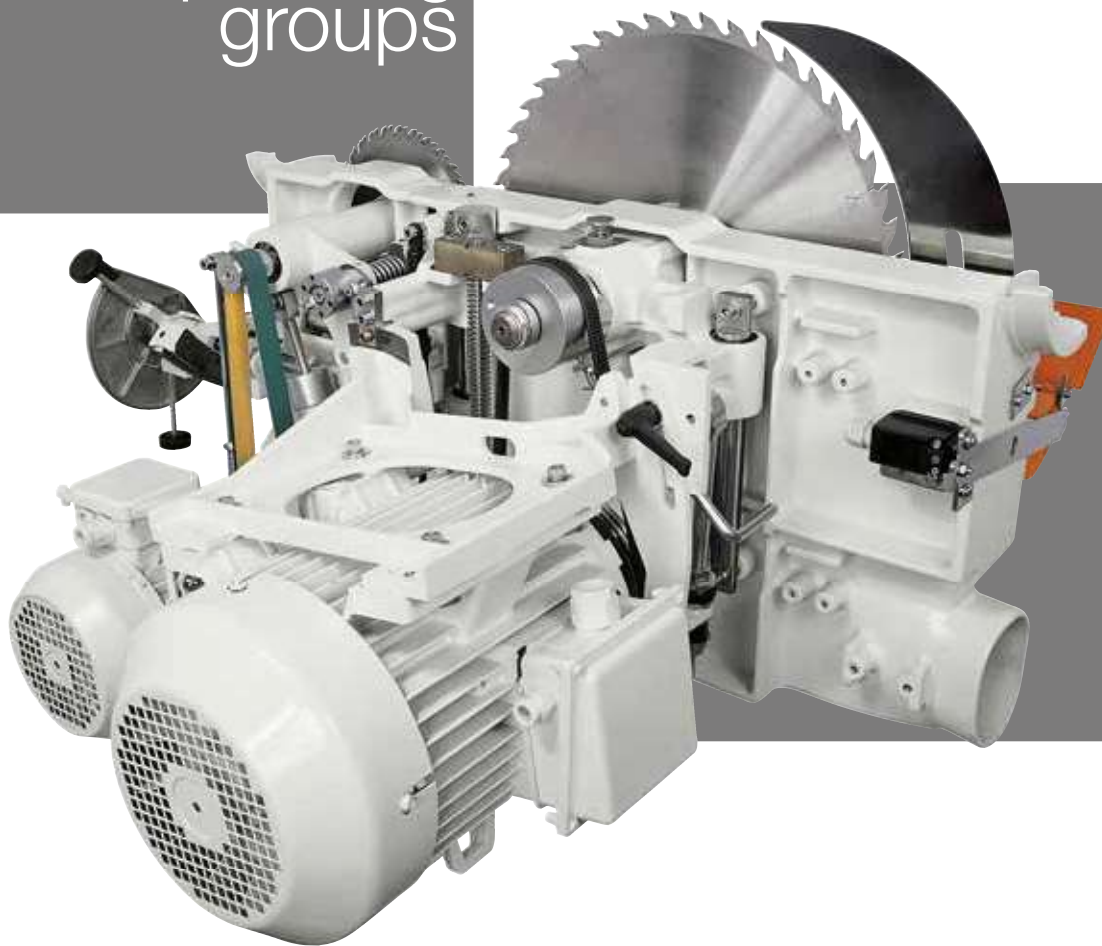
Sliding Carriage
high cutting quality



Rip Fence
smoothness and
precision

Essential configuration with complete
equipment to carry out professional machining.

circular saws operating groups



sturdy structure

Saw unit

The saw blade lifting is carried out by a strong cast-iron structure with sliding on ground round slideways which guarantee the **best accuracy**. The unit tilting is carried out on cast-iron rotation sectors in a crescent shape to ensure reliability over time.

always user friendly and precise

Handwheels on the machine front

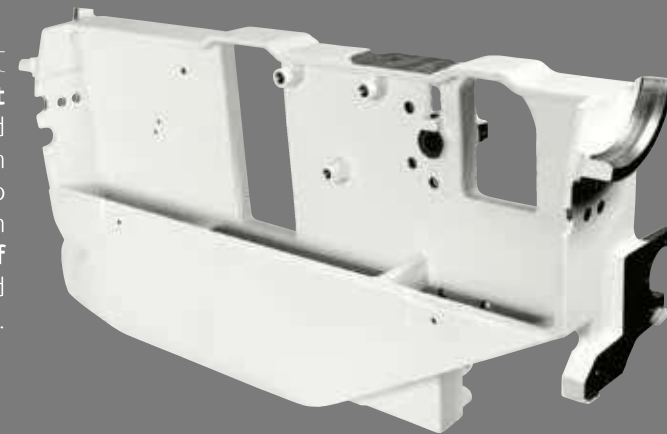
Ease of use in every day operation due to the dedicated gear box (**SCM solution**), fully protected from dust, that provides a smooth and direct transmission. Every minimum handwheel movement corresponds to a precise blade adjustment.



perfect cut

Saw unit

Maximum torsional rigidity and the total absence of vibration through the closed loop structure of the saw unit which ensures **perfect alignment of the blades** during tilted and difficult cuts.



simple and effective

Manual adjustment of the scoring unit

Vertical and horizontal adjustments are carried out by user-friendly mechanical levers that operate directly making **precise and smooth movements**. The useful mechanical stops allows immediately finding of the set position. The positioning of the controls allows their use without moving from the front of the machine.





maximum cut quality guaranteed over time

Sliding carriage

The carriage will never require adjustment due to its closed reticular geometry with steel guides using an **exclusive method of mechanical fixing**.



Furthermore the **"arc" profile of the class arch-ground steel slideways (SCM Solution)** ensures:

- No play and loads four times higher than others
- $\pm 0,05$ mm tolerance on the entire carriage length for straight and high quality cutting
- Sliding effectiveness over time, thanks to the particular guides positioning which ensures protection from dust



smooth, rapid and precise positioning

Rip fence

Sliding of the rip fence support on round bar with micrometric adjustment. The support can be also equipped with digital readout for fence position with detecting system on magnetic band (option). The fence can be easily excluded from the working area when it isn't used.



class



nova

optimal support

Squaring frame and fence

Panel loading is easy on the large squaring frame with an idle roller at the end and the mobile cross beams offer an **optimal support** also to smaller panels. The telescopic squaring fence with the inclined metric scale and two reversible stops can be used to square panels measuring 3200 x 3800 mm and for tilted cuts at up to 45° on both sides of the frame.

programmable circular saws electronic controls



the practical advantage for automatic control of the main positions

Ready

The **programming** of the work becomes **simple and effective** with the electronic control with a 4" LCD display.

- Working mode: manual, semi-automatic and automatic with a memory capacity of up to 99 programs.
- Tool data setting with automatic height adjustment.
- Calculator and hour counter.



Saw unit lifting



Saw unit tilting



Programmable rip fence (option)



Blade speed readout

the operating advantage for easy assistance

Easy

Maximum reliability due to the function pushbuttons and easy-to-use with the electronic control of up to 5 axes with the 7" LCD display, 16:9 format. Integrated and fast control of all dedicated functions.

These features translate into immediate improvements in productivity and guarantees the capability of the full potential of the machine.



one cut only, the correct on

Operator's support

The large display suggests to the operator information for the correct use of any cutting configuration. In particular it displays in real time the correct position of the stop on the basis of the known measurements of the work piece (**SCM Solution**).

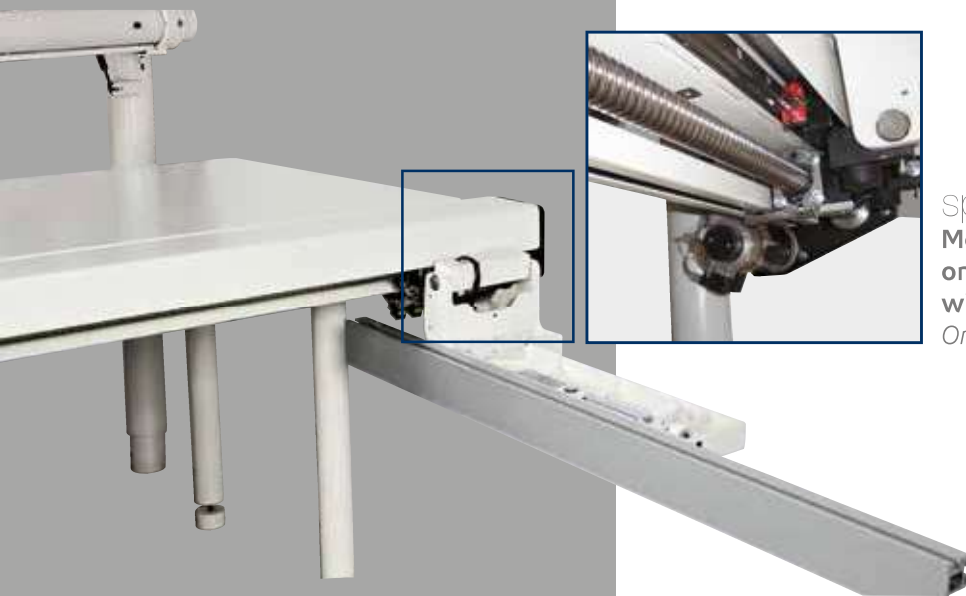


Easy control can easily manage the **inverter for the adjustment of the saw blade rotation speed and the scoring unit alignment (option)**.





maximum practicality
Pushbuttons integrated in the carriage
 The possibility to start or stop the blades motors from the pushbuttons located at the ends of the carriage **considerably helps when machining large dimensioned panels.**
(option)



speed and precision
Motorised programmable rip fence mounted on a recirculating ball screw mechanism with sliding on linear guides.
Only for Ready 3 Plus / Easy 3 Plus versions



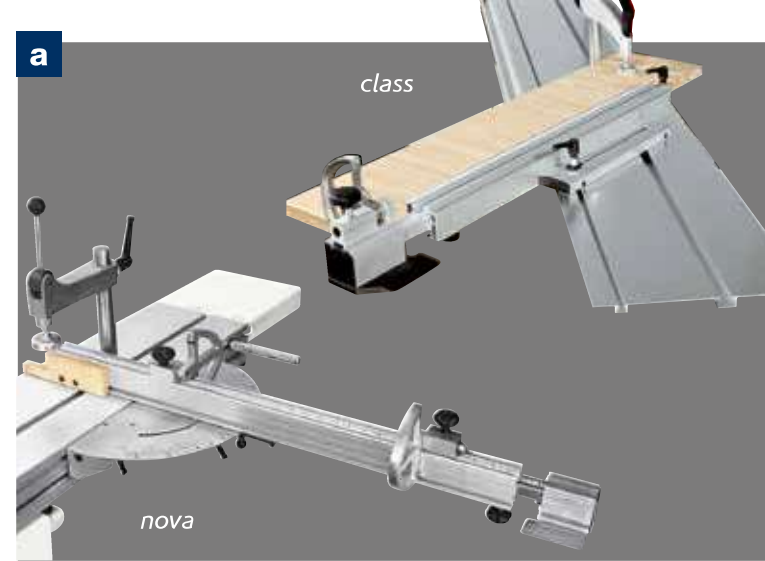
practicality and safety
Motorized programmable rip fence with steel cable and sliding on sturdy round steel bar.
 Position readout on magnetic band.
Only for Ready 3 versions

circular saws main optional devices

Angular cutting devices

Available for the following versions

- a) traditional
- b) with automatic self-adjustment of the stops position in respect of the blade
- c) with automatic self-adjustment of the stops position in respect of the blade and electronic readouts for stop position and rule tilting angle



Rip fence unit

The exclusive referencing system for the first trim cut allows the setting of trim quantity to be cut for every side **without any test cuts**.

Available also with electronic readouts.





Squaring frame with "Complex" device

with automatic self-adjustment of stops position in respect of the blade and rule tilting angle. Furthermore, thanks to the dedicated frame structure, it is possible to carry out **tilted cuts** keeping the squaring rule comfortably within the operator's reach, both in acute cuts and in obtuse ones, without renouncing to a valid support of the piece.



Fence for complementary cutting

Device to be applied directly on the squaring rule that allows to quickly carry out cuts with angles complementary to the rule one.

Electronic readouts on the squaring stops
The stops can be easily read even from distance.



speed and precision
"Quick Lock" fence with rapid release.

Minimum set up time with the **SCM system that allows rapid fence positioning.** The extending roller and the stronger frame support maximise performance.

circular saws main optional devices



Overhead blade protection
For totally safe machining.



Surface reinforcement treatment
For sliding table and mobile crossbars of squaring frame.
Dedicated to the intensive processing and particularly
abrasive materials.



Mechanical preset for "DADO" machining
Possibility of using a tool (not included)
to replace the main blade, with 203 mm
maximum diameter and 20 mm
maximum thickness.



"Pro-Lock"
"Pro-Lock" system for the main blade rapid locking
with fast and tool-less riving knife adjustment.



Expandable scoring blade
Manually expandable with variable thickness from
2,8 to 3,6 mm. 120 mm blade diameter.

Pneumatic presser

Particularly suitable for the cutting of thin materials.



Second extension with sliding rail support
to safely support panels for large dimension
and weight.



Advance materials machining

PVC and other plastic materials. Nylon, polycarbonate and other synthetic materials. Corian and other composite materials. Aluminium, brass and other light metals.



Device for the blade micro-lubrication

Compulsory for the machining of light alloys,
extremely useful with particular plastic materials.



circular saws main optional devices

	class si 550ep
"READY 3" version	0
"READY 3 UP" version	-
"READY 3 UP PLUS" version	-
"EASY 3 UP PLUS" version	-
"CUT 140" version	-
Expandable scoring blade	-
Surface reinforcement treatment for sliding table and mobile crossbars of squaring frame	0
Start/stop pushbuttons integrated in the sliding carriage	0
"Quick Lock" squaring fence	0
Squaring fence with LCD readouts for stops position	0
Fence for angular cutting on the sliding carriage	0
Fence for angular cutting with self-adjustment	0
Fence for angular cutting with electronic readouts and self-adjustment	0
Squaring frame with "Compex" device	0
Fence for complementary cutting	0
Fence for rip cutting on the sliding carriage	0
Fence for rip cutting on the sliding carriage with electronic readout	0
Inverter for electronic speed change from 2700 to 6000 rpm	-
2-axis scoring unit with automatic adjustment	-
Electronic readout of parallel fence position	0
Presser on entire carriage length	0
Second extension with sliding rail support	0
"Pro-Lock" system for the main blade rapid locking with fast and tool-less riving knife adjustment	0
"DADO" machining	-
Machine configuration for advanced materials machining	-
Device for the blade micro-lubrication for the machining of plastic materials and light alloy	-
Overhead blades protection	S

* Standard for CE and USA-Canada versions; Option for NO CE versions

S Standard
O Option

■ class si 400ep	■ nova si 400ep	■ class si 400	■ class si 350	■ class si 300	■ nova si 400	■ nova si 300	■ nova si 300s
0	0	-	-	-	-	-	-
0	0	-	-	-	-	-	-
0	0	-	-	-	-	-	-
0	-	-	-	-	-	-	-
-	-	-	-	-	-	-	0
0	0	0	0	0	0	0	0
0	-	0	0	0	-	-	-
0	0	0	0	0	0	0	-
0	-	0	0	0	-	-	-
0	0	0	0	0	0	0	-
0	0	0	0	0	0	0	0
0	0	0	0	0	0	0	0
0	0	0	0	0	0	0	0
0	-	0	0	0	-	-	-
0	0	0	0	0	0	0	-
0	0	0	0	0	0	0	-
0	0	0	0	0	0	0	0
0	-	0	0	0	-	-	-
0	-	0	0	0	-	-	-
0	-	-	-	-	-	-	-
0	-	-	-	-	-	-	-
0	0	0	0	0	0	0	0
0	-	0	0	0	-	-	-
0	-	0	0	0	-	-	-
0	-	0	-	-	-	-	-
0	0	0	0	0	0	0	0
0	0	0	0	0	0	0	0
0	0	0	0	0	0	0	0
0	0	0	0	0	0	0	0
S*	S	S*	S*	0	S*	0	0

